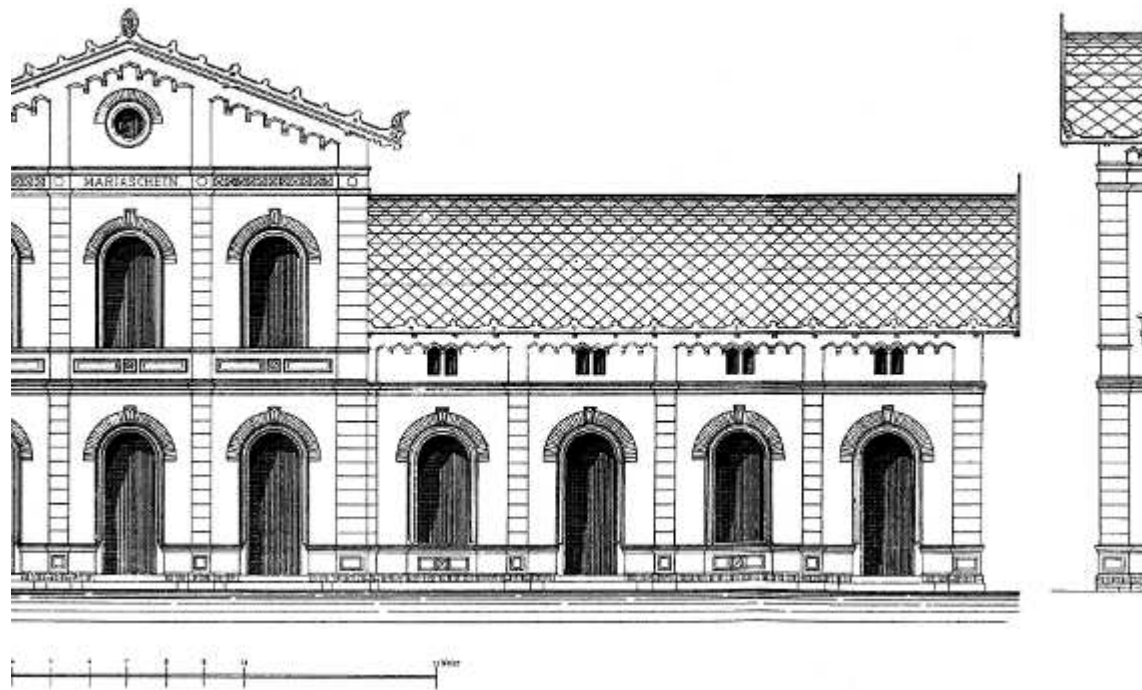
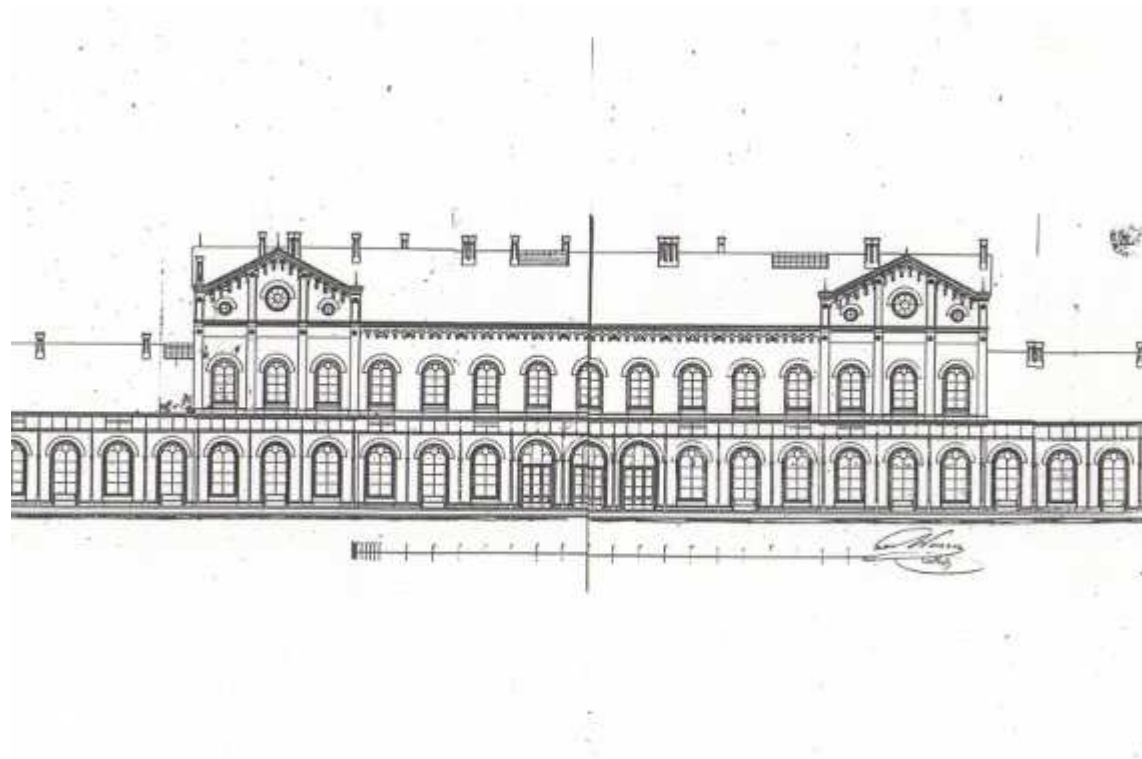


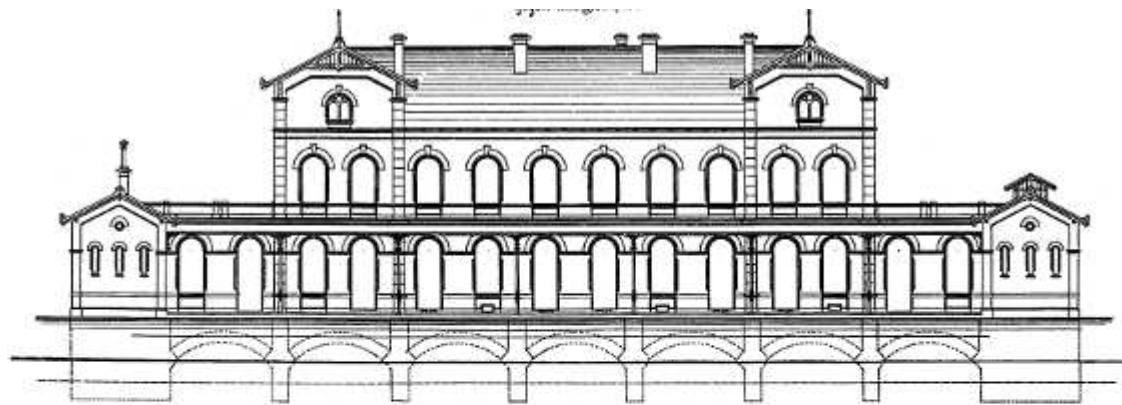


Façade.

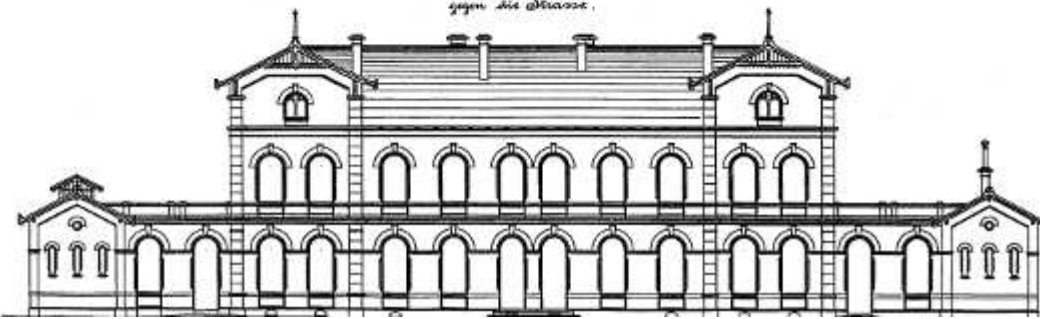




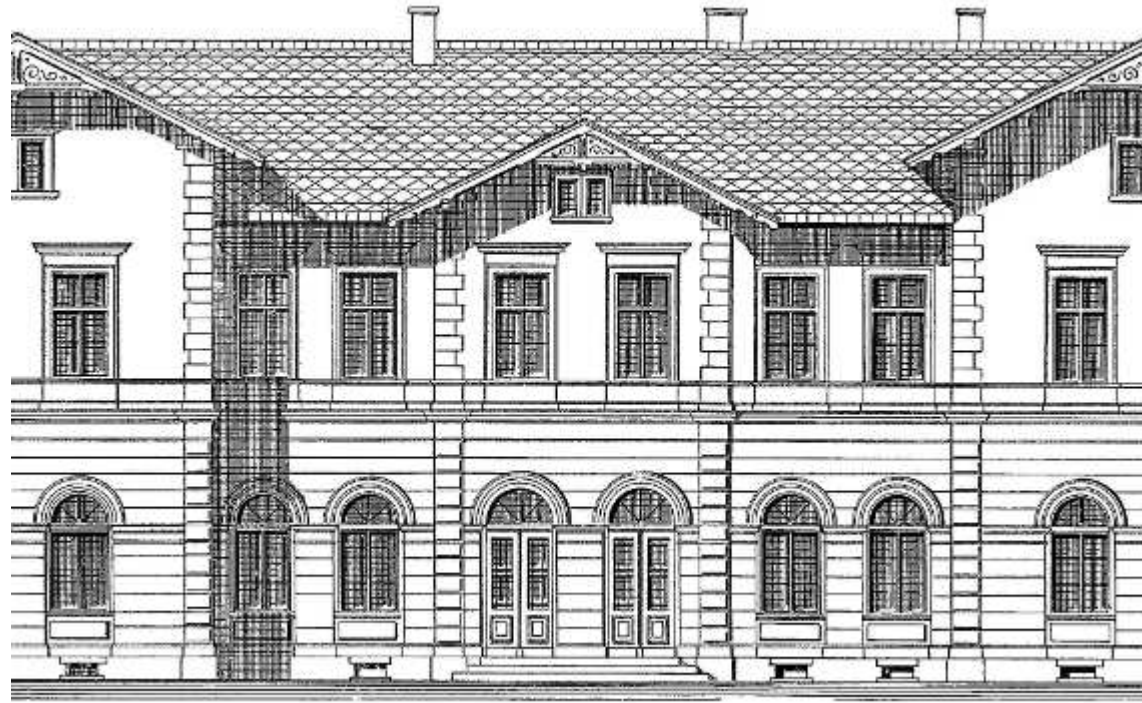




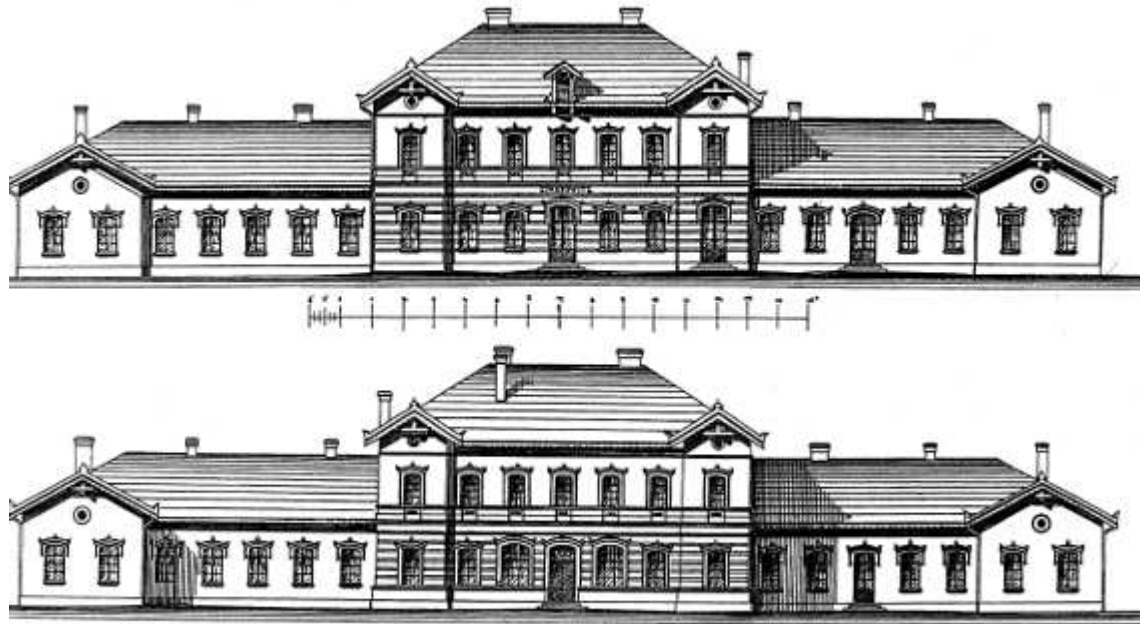
Ansicht  
gegen die Straße.



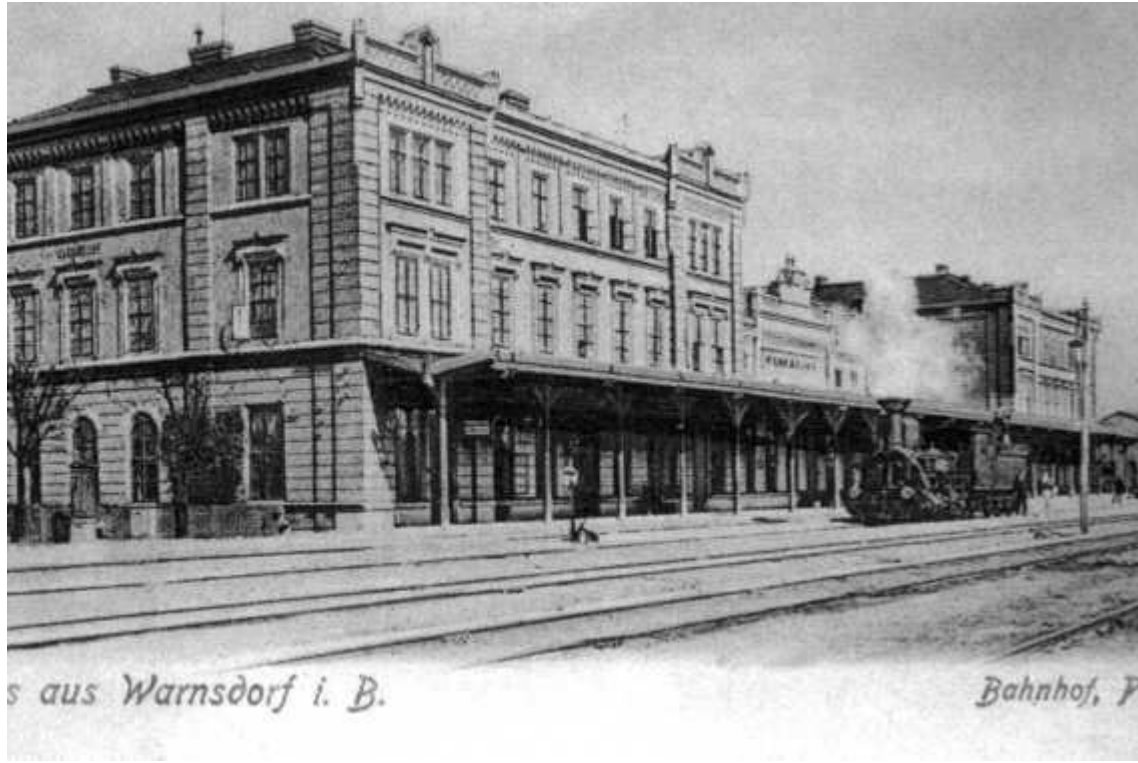




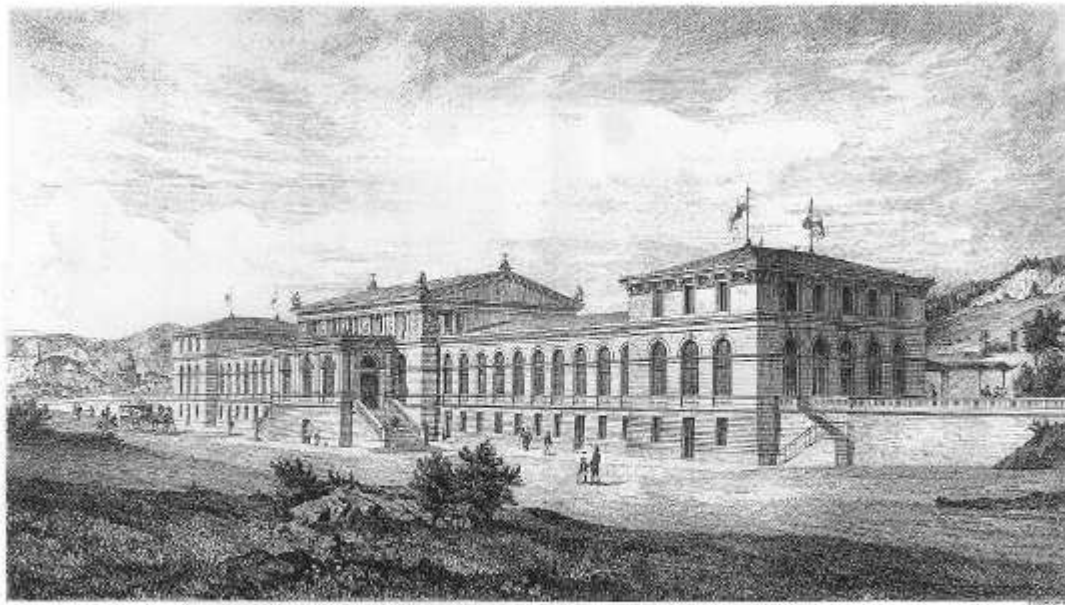
*Aufnahmsgebäude für die Station Gwanowitz, Rananitz, Sokolnitz, Tuzas*



*Bahnhof, Rumburg, Sudetenland*







DER GRENZGANG DER ÖSTERR. WESTB. BAHN IN TRIESTE

(Zweiteil. 1859)









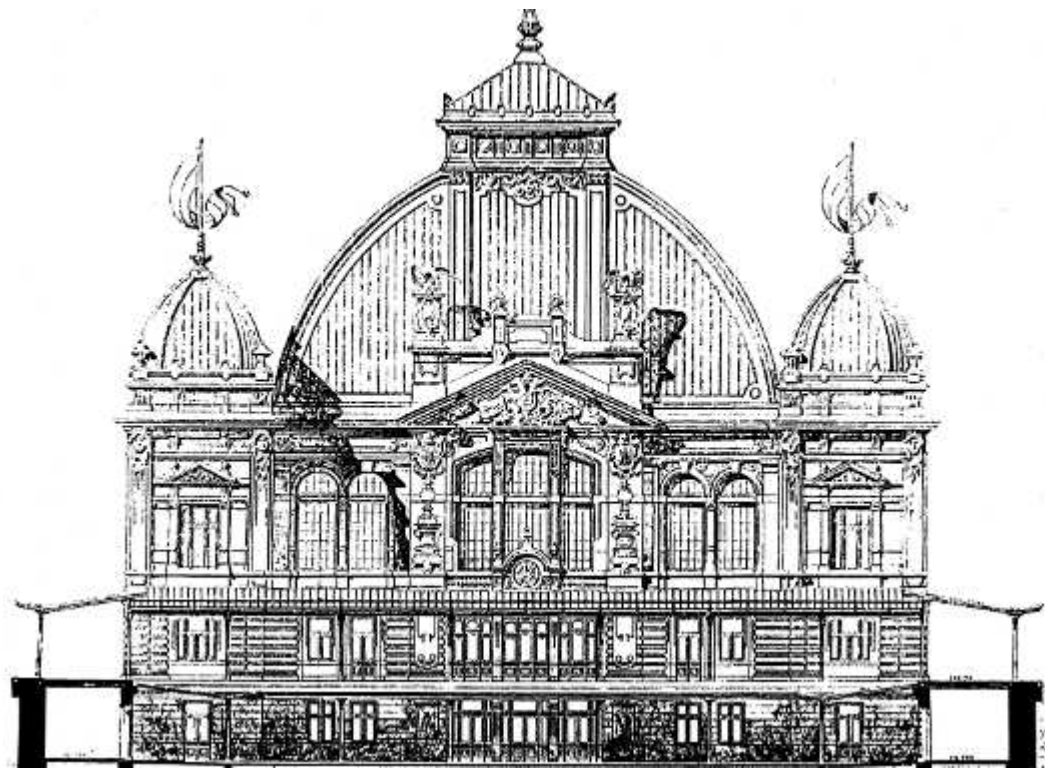




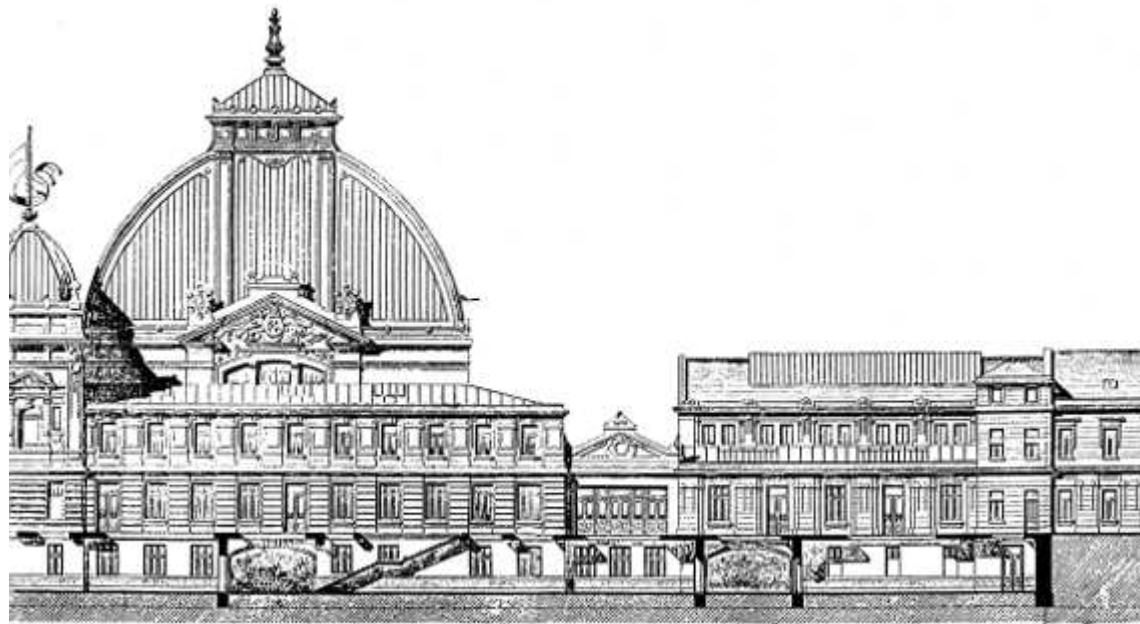




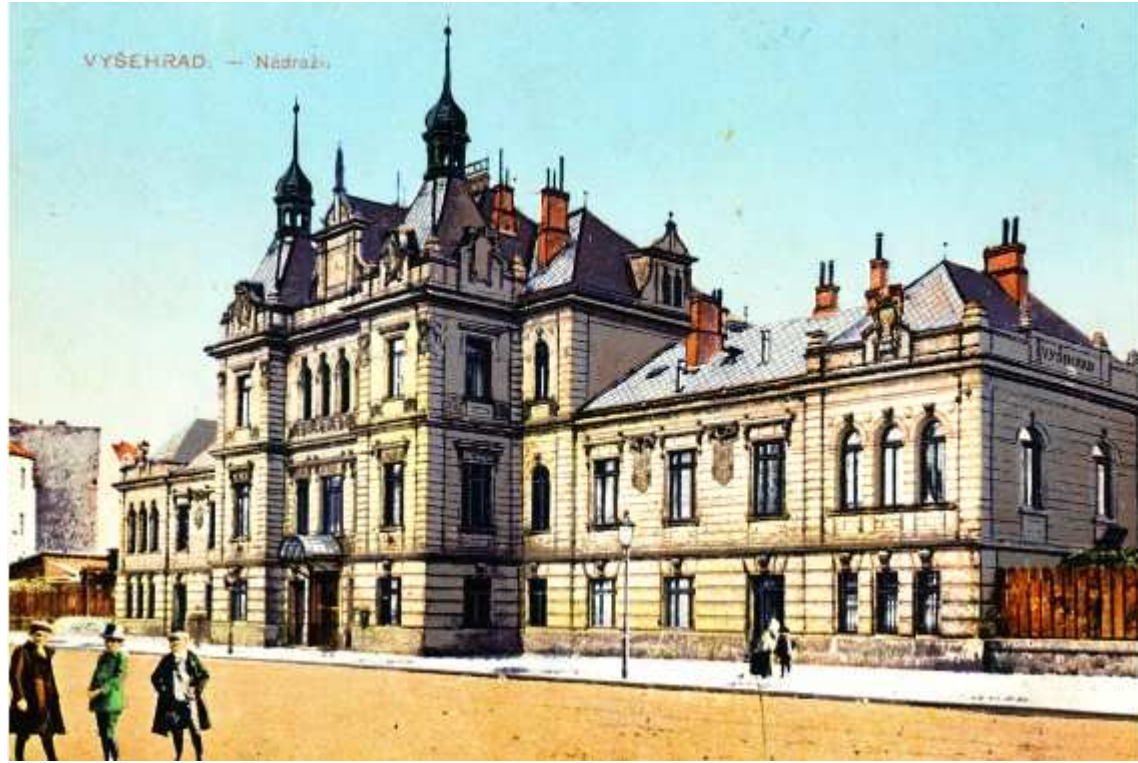




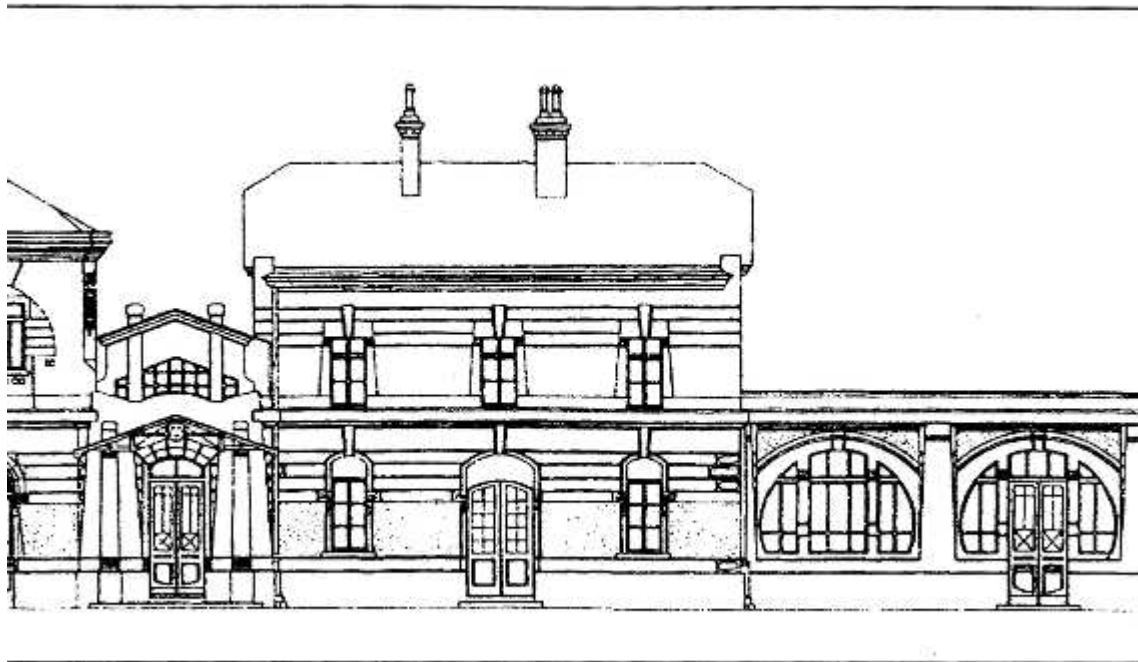
Élévation de l'édifice principal.

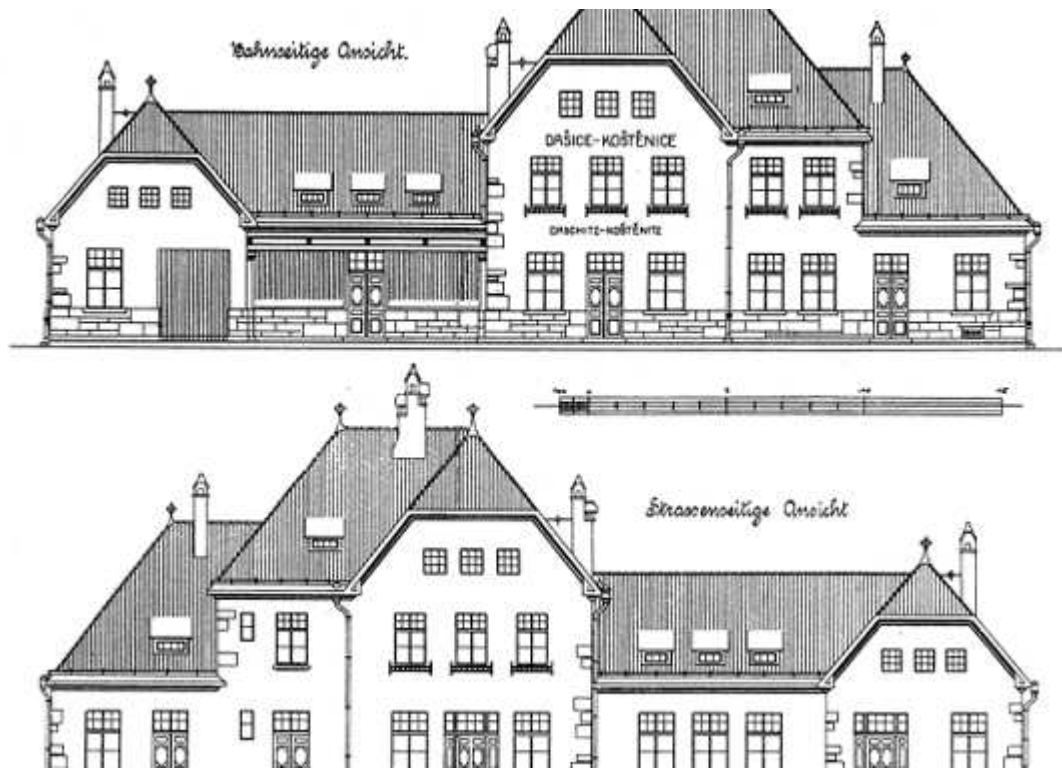












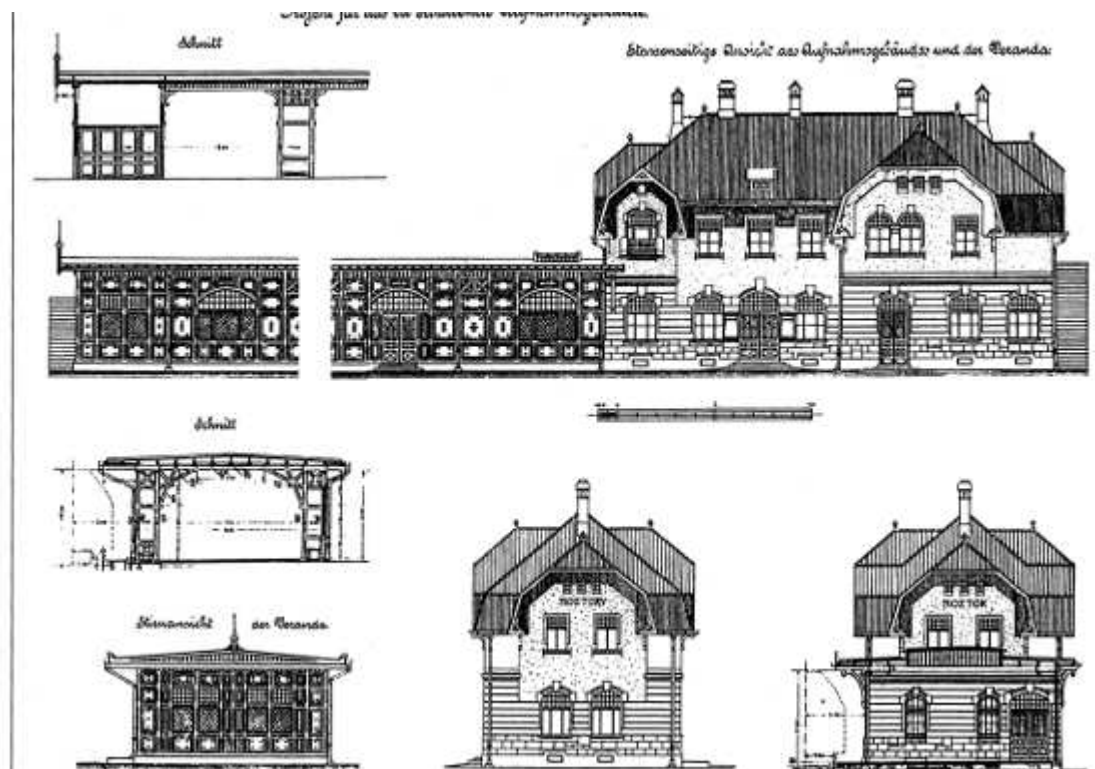






FIGURE 10. PL. 100.  
RIGHT SIDE VIEW.

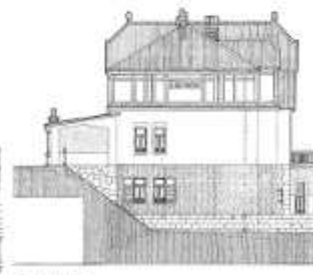


FIGURE 11. PL. 100.  
RIGHT SIDE VIEW.





